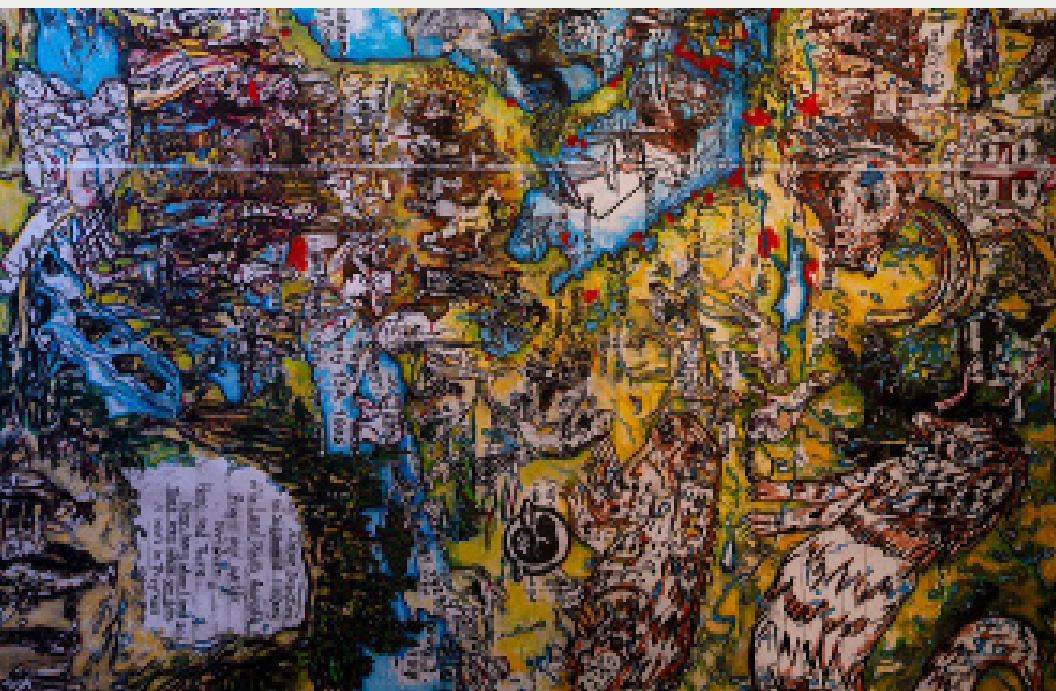




my gardenship journal



GardenShip State

This Journal Belongs to:





Jeff Thomas, *CORN = LIFE*, 2021, (detail)

GardenShip Co-curators' Welcoming Statement

In my role as an artist-educator, I have worked on numerous projects with environmental themes. I have often found that such work is best taken on collaboratively. The social, cultural and biological complexity of our world needs to be collectively addressed in order to come up with creative responses that represent the breadth of the community, and of the planet itself.

More than five years ago I began to look for collaborators and other supporters for an environmentally focused project that would draw artists and writers together, recognizing our distinct origins and experiences while not treating borders as barriers. Amidst the many people I turned to, I invited the photographer and curator, Jeff Thomas, be a Co-curator on this project. I was honoured that he agreed.

Patrick Mahon,
Exhibition Co-curator

Patrick's invitation to take part in *GardenShip and State* presented me with a new challenge, since this was my first curatorial experience with environmental issues. My thoughts turned to what I had learned from my elders and to the precepts of Haudenosaunee thought as exemplified in the 1613 Two Row Treaty. At that time, the Dutch colonists in what is now the area of Albany, New York, had begun expanding into Haudenosaunee territory. What eventually emerged was an agreement to live in peace and respect, and not to interfere with each other's affairs.

Today, those precepts are still adhered to by the Haudenosaunee and in turn, they came to provide a basis on which Patrick and I could bring artists from divergent practices and ethnic backgrounds into a cohesive forum to address the issues and challenges we all have to face in these challenging times.

Jeff Thomas,
Exhibition Co-curator



Sharmistha Kar, *Blurred steps III*, 2020, (detail)

Welcome, welcome

to GardenShip! This show brings together artists and writers whose work grapples with the state of our damaged planet and what we can do about it.

This booklet is your journal.

It is meant to give you the opportunity to participate in the GardenShip project.

You can pull out the map to begin your journey, learn more about the artists and their works, and see where and how you can engage with specific works in the show.

**Tom Cull
Amelia Fay
Joan Greer
Andrés Villar**

Journal Creators

We invite you to engage with the artworks and themes of this exhibition, but don't feel limited by our prompts!

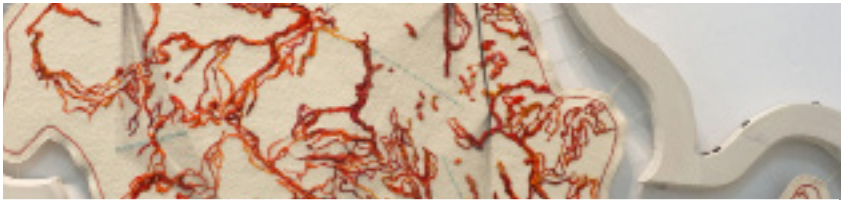
Reflect, doodle, sketch, vent. These are yours to keep or share more broadly through the GardenShip social media channels and website using the hashtag #GardenShipAndState.

You have stories to tell and thoughts to share. Whatever you choose to give will help GardenShip bear more fruit.

inspired!



Your Journey Begins Here!



Michelle Wilson, *Forced Migration*, 2020-21, (detail)

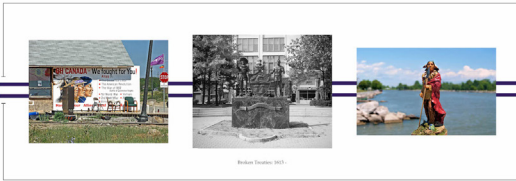
Home

GardenShip and State finds its heart on the banks of Deshkan Ziibi, where the antlers branch. These are the traditional lands of the Anishinaabek, Haudenosaunee, Lūnaapéewak and Attawandaron peoples, on lands connected with the London Township and Sombra Treaties of 1796 and the Dish with One Spoon Covenant Wampum. Others related to this project find their homes elsewhere. *What are your stories of home?*



Home is a space filled with stories, memories, dreams, impressions **Share one here.**





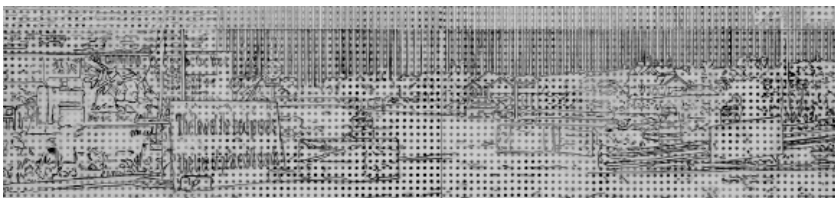
Jeff Thomas, *Broken Promises*, 2021, (detail)

Shared Land

Treaties, like the Two-Row Wampum, were negotiated between groups of people to navigate sharing the land and resources. They were meant to be living documents and continually evolving. Works in this exhibition such as Jeff Thomas's *Broken Promises* and Patrick Mahon's *Threshold Flags* and Lori Blondeau's *Iskwew on Lake Winnipeg* engage with these histories and show how treaties have often been ignored and disregarded.



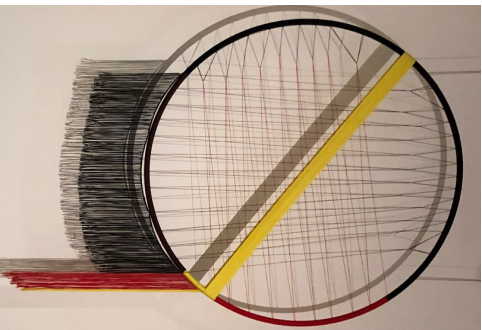
Find Jeff Thomas's wall panel that describes the history of the Two Row Wampum Treaty. Its principles of enduring friendship and peace have guided the *GardenShip and State* project.



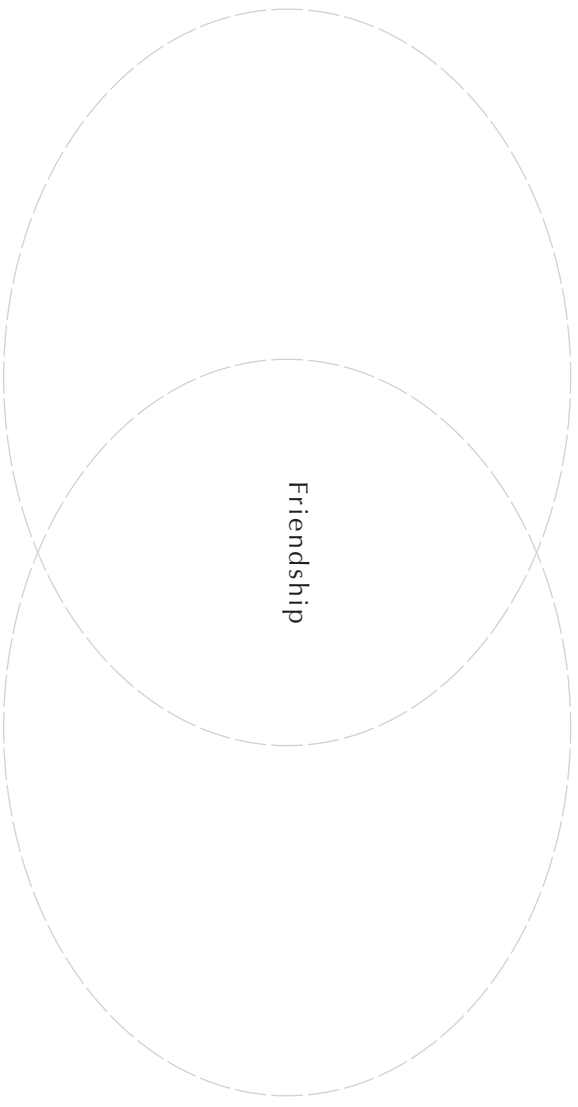
Patrick Mahon, *Threshold Flags: Caledonia Occupation Site*, 2021, (detail)

Shared Space

Add your own words...



Quinn Smallboy,
Lines – Large Drum Ring, 2021
(detail)



Go to (<https://native-land.ca/>) to learn about the traditional territories on which you have lived and the treaties that cover those lands.



Mark Kasumovic, *Skipsea #1*, 2021, (detail)

GardenShip Cross-Pollination Map

Find the pull-out map and discover its layers. Enter into this “blueprint” for creatively navigating the *GardenShip and State* works. In addition to the titles of the GardenShip artworks, you will find themes in red scrawled over the Deshkan Ziibi.



- What theme words would you add?
- What personal words can you add to make this your map?
- This is where I live.
- Tag the map on the opposite page...



Amelia Fay, *Curating Colonialism*, 2021 (detail)





Ron Benner, *As the Crow Flies*, 1984-91, (detail)

River of Words

Water is a giver of life. It runs through our bodies and the land, connecting us to one another and to the plants and animals that, like us, depend on water for existence. Jeff Thomas's *It's Still A Crying Shame* and Ron Benner's *As the Crow Flies* look out over Deshkan Ziibi.



What are the waterways that are important to you? Use this space to jot down words, memories, prayers, poems, doodles, greetings that you wish to send downstream.



Sean Caulfield, *Powerlines*, 2021, (detail)

Who Pollinates Your Garden?

Bees, butterflies, beetles, hummingbirds and other birds, bats and other small mammals are pollinators crucial to the wellbeing of our planet's ecosystems. Consider how they enliven and cross-pollinate the spaces they inhabit. Find them in works such as Adrian Stimson's *Naamo Ooko'o'wa Omahkokata A'paissapii ...* (Bee Tower and Gopher Looking) and Andrés Villar's *Birdsong*, as well as when outside, exploring the grounds of Museum London.



Where do you find them in this exhibition? In your own garden? Build an acrostic poem below that celebrates POLLINATORS.

Ex: *Bumble*
honEy
Environment

**P
O
L
L
I
N
A
T
O
R
S**



Paul Chartrand, *Dessicated Root Text*, 2020-21, (detail)

Envisioning Futures: Caring for the Garden

Gardens produce and nurture many complex and rich relationships. Gardens can be big or small. The Earth itself is the ultimate garden, rotating in space around the sun that fuels all its life.



**Plot out (draw) your own ideal garden--
is it orderly, wild, both?**

All gardens require effort and care. With care, gardens give much; without it, they wither away. Watch Tom Cull's *UpStream/Downstream* (made in collaboration with Danielle Butters and Sruthi Ramanarayanan), Ashley Snook's *the honey is sweet*, and Jessica Karuhanga's *Blue as the Insides*, to see how we inhabit the world and live in it both with and without care. Or venture into the speculative world of Sean Caulfield's uncanny yet whimsically envisioned *Powerlines*.



**Use your phone or take a photo to record what
a damaged garden or world looks and sounds
like. What does a healing garden or world look
and sound like? Share your recordings with
#GardenShipAndState.**



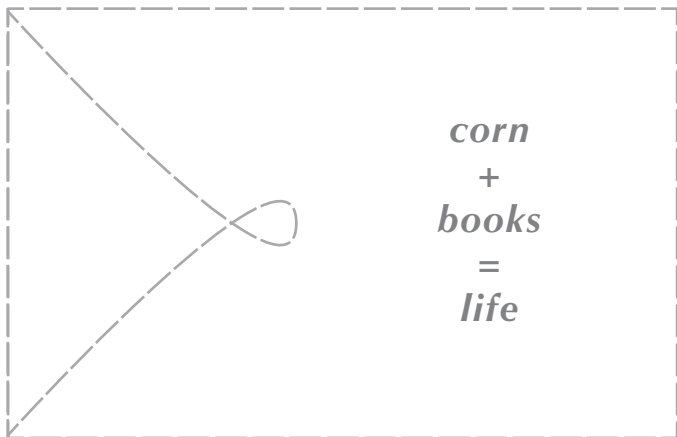
Jeff Thomas, *CORN = LIFE*, 2021, (detail)

A Gift of Seeds: Bringing it All Home

Once outside the Museum you will see Ron Benner's garden installation, *As the Crow Flies*, and be able to spend time with the tile work *Map of Deshkan Ziibi* by Jamelie Hassan. Head about four blocks east to the central branch of the London Public Library (251 Dundas Street); go to the third floor and visit Mary Mattingly's *Ecotopian Library*. Keep your eyes open for the GardenShip seed packets there.



Slip one of the seed packets into your GardenShip Journal to keep it safely, together with your thoughts and memories of the exhibition. In it you will find your gift of corn to take home and plant.



Credits and Acknowledgements



GardenShip Journal

London, Ontario, 2021

gardenship.ca

GardenShip Journal Creators

Tom Cull

Amelia Fay

Joan Greer

Andrés Villar

GardenShip Cross-Pollination Map:

Andrés Villar

Designer:

Katie Wilhelm

Acknowledgements

We are grateful for the rich insights and ongoing support given to us by Jeff Thomas and Patrick Mahon. We would also like to acknowledge the other members of the GardenShip project; the staff and volunteers of Museum London, with special thanks to Anita Bidnosti whose work has been insightful, supportive and steadfast; and of the London Public Library (with special thanks to Joanna Kerr).

Cover Image Credit

Cover image based on the following work:

Michael Farnan, *A Map Depicting the Settlement History of the Land, Plants, Animals, People, and Water Between Here and There. Here being where I am, and There being where you are. A Work in Progress* (detail) 2021. Ink, chalk, charcoal on paper. With permission from the Artist.

GardenShip and State gratefully acknowledges all of its supporters, past and present, including Arts & Humanities, Western.



GardenShip AND State

MUSEUM
LONDON



ONTARIO ARTS COUNCIL
CONSEIL DES ARTS DE L'ONTARIO
an Ontario government agency
un organisme du gouvernement de l'Ontario



Social Sciences and Humanities
Research Council of Canada

Conseil de recherches en
sciences humaines du Canada

Canada

Museum London, 421 Ridout Street North, London ON. Canada

museumlondon.ca

